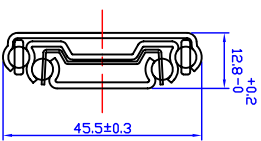
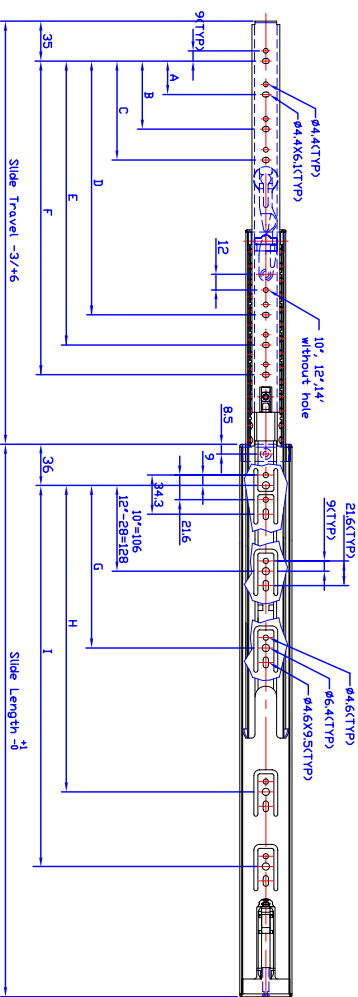


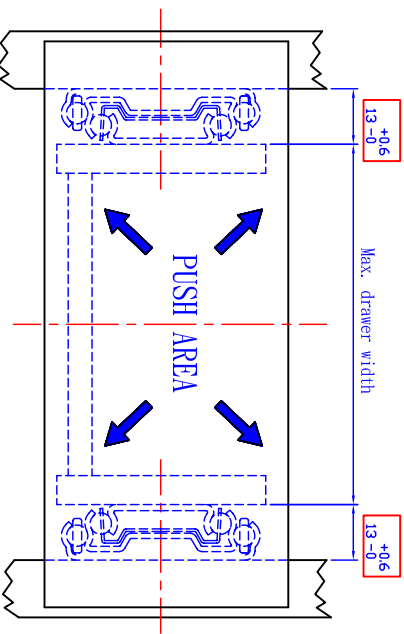
# 4060-00

## Push-rebound function

- Full extension
- Push-rebound function built in slide, easy for installation
- Non-handed Disconnect Release
- 45 kg./100 lbs. Loading at 18"
- Rebound 2" - 5" when push drawer
- Electro-Zinc plated with clear, yellow or black chromate, or Cr-Free galvanized steel



SIZE	Slide Length	Slide Travel	Load Rating	A	B	C	D	E	F	G	H	I
10"	250	238	20						156			
12"	300	305	25						200			
14"	350	356	35	96					256	192		
16"	400	406	40	128					294	224		
18"	450	457	45	96	160				344	288		
20"	500	508	45	96	160	352			394	224	352	
22"	550	559	40	128	192	384			444	224	352	
24"	600	610	40	128	224	416			494	224	352	448
26"	650	660	35	128	224	416	480		544	224	352	480
28"	700	711	35	128	224	288	480	544	594	224	352	544

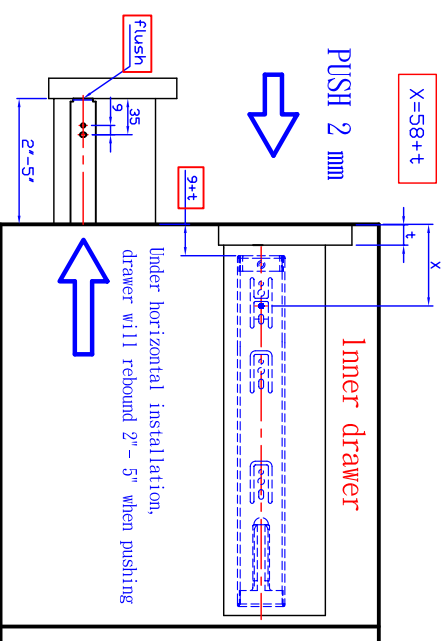
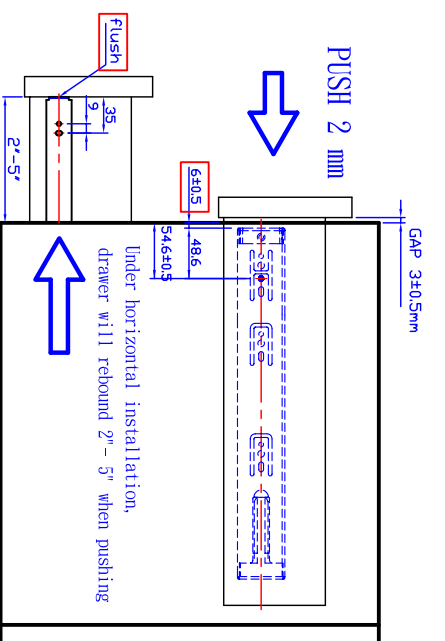
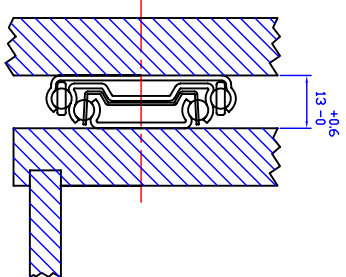


SIZE	Slide Length	Max. drawer width Suggested
10"	250	450
12"	300	500
14"	350	550
16"	400	600
18"	450	650
20"	500	700
22"	550	750
24"	600	800
26"	650	850
28"	700	900

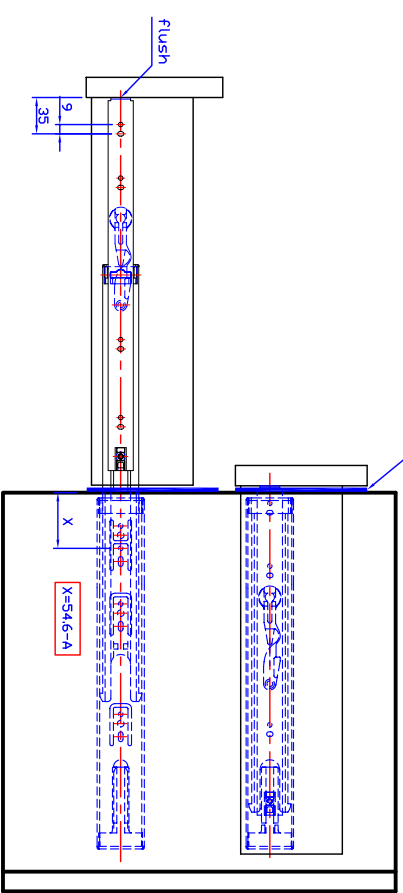
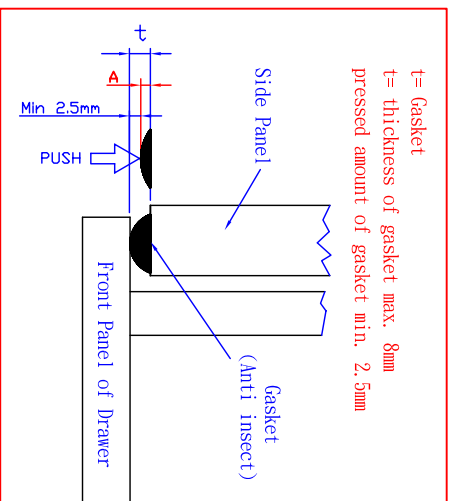
# INSTALLATION 4060-00

- Fully push in (2 mm) for open or close
- Under horizontal installation, drawer will rebound 2" - 5" when pushing

## Without Gasket



## Gasket (Anti insect)



TOP VIEW