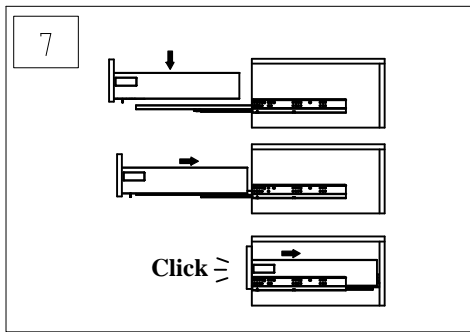
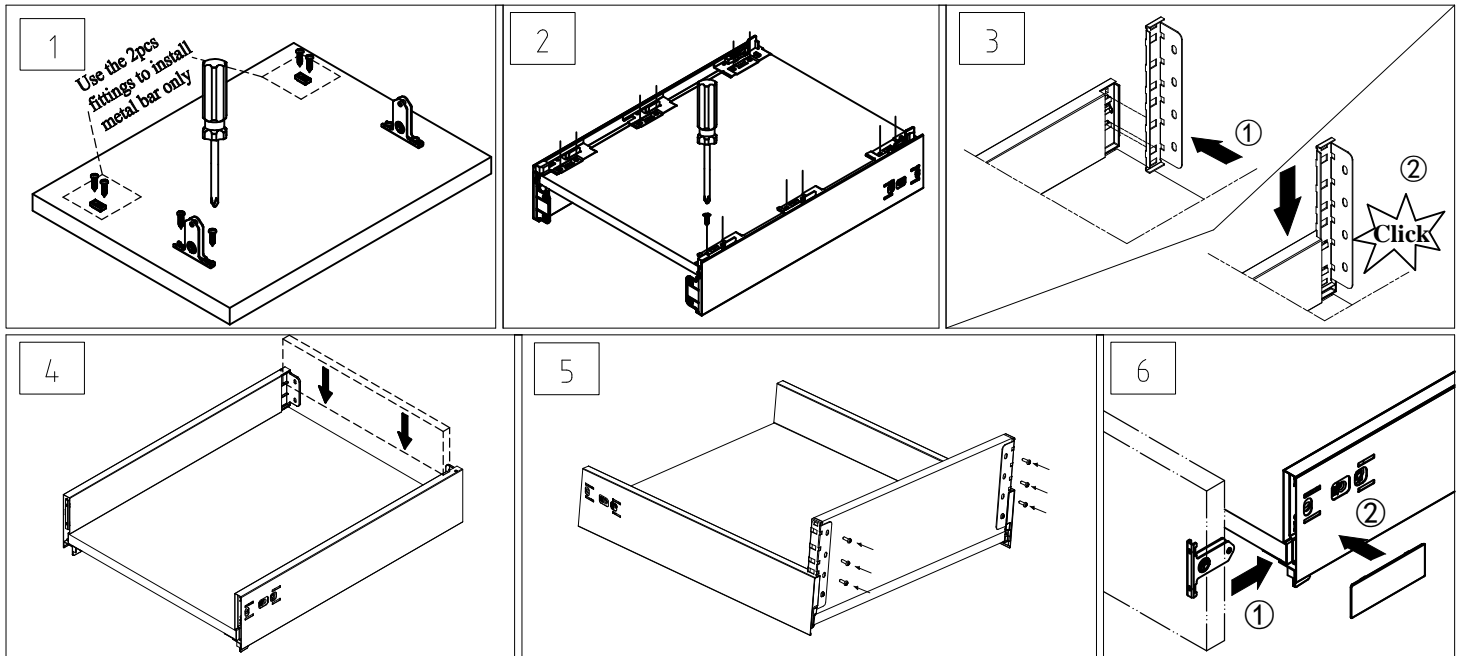
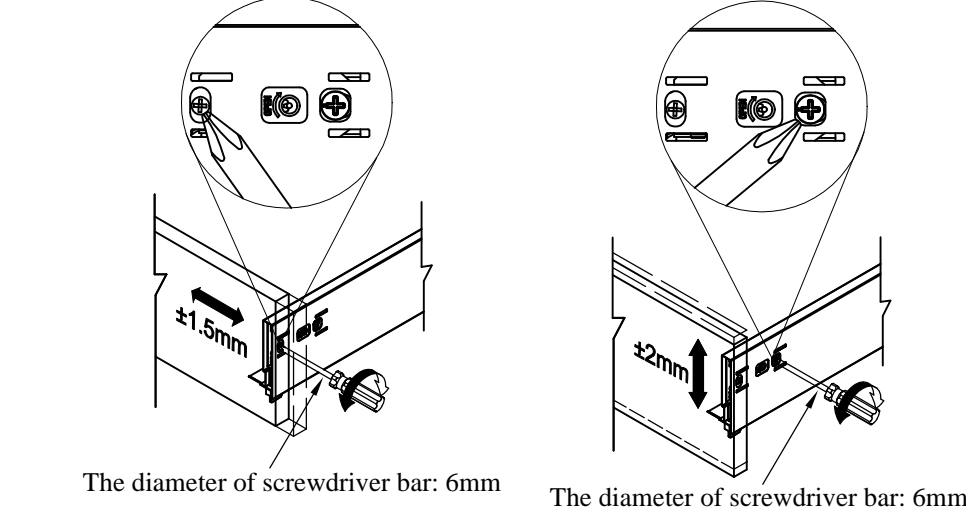


Drawer installation:



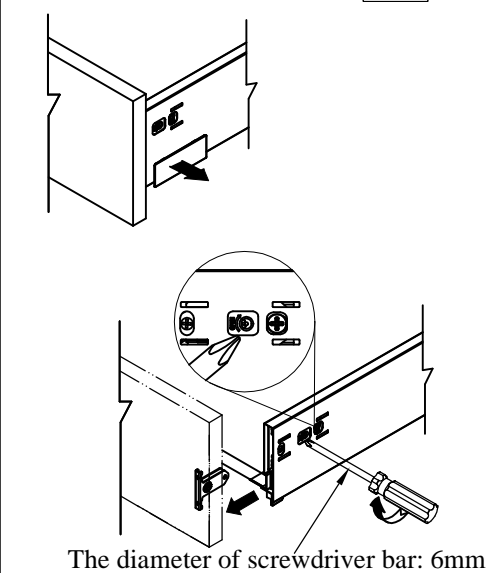
The drawer regulation :



The diameter of screwdriver bar: 6mm

The diameter of screwdriver bar: 6mm

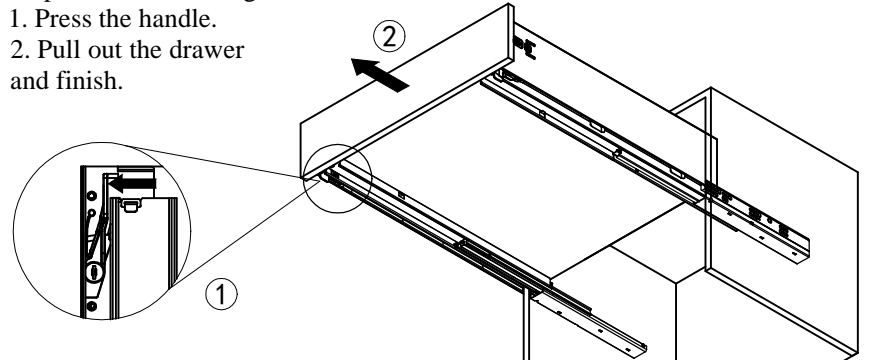
Disassembling the drawer: 1



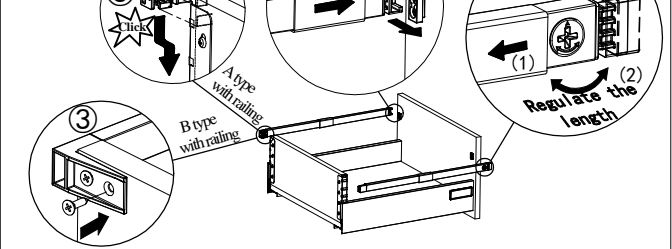
The diameter of screwdriver bar: 6mm

2 Steps of disassembling:

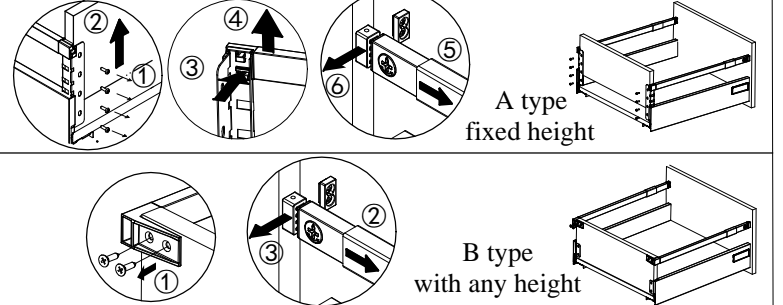
1. Press the handle.
2. Pull out the drawer and finish.



Installation and regulation of metal bar



Disassembling metal bar



1. The runner isn't stable when sliding? Please check if it has any bits of wood or sundries on the runner when assembling it.
2. The runner isn't sliding well? Please check if cutting size of the bottom and back panel is correct; and check if the bottom and cabinet are in the right position; check if both of the runners are in the same level of front and back, left and right.
3. The drawer shakes? Check if the drawer side is installed correctly, if both of the runners are not paralleled, we have to regulate by the oval holes.
4. The drawer can't be closed well or the distance of soft-closing is too short? Please check if the drawer side is installed correctly, and check if the distance of the runner to cabinet side edge is correct.
5. The drawer is broken during the transportation? During the transportation, please don't put the assembled drawer and cabinet upside down, otherwise it will make the drawer broken.